

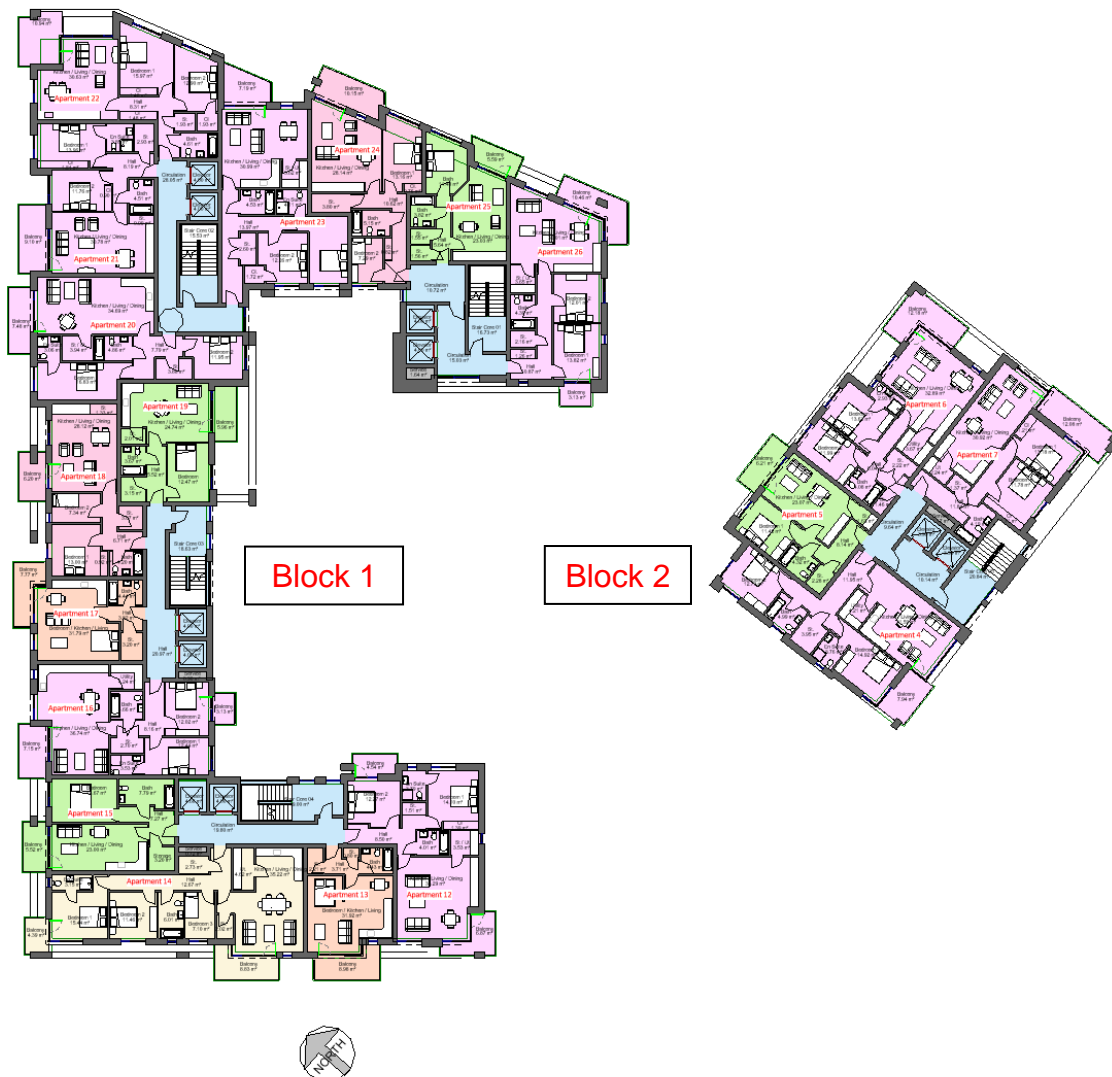
## APARTMENT TYPES; Sector 8b

**Proposed Development:**

**Residential Development,  
Baldoye, Co. Dublin**

**Client:**

**Lismore Homes Developments**



CCH Architects Limited  
Lacken House, Dublin Road, Kilkenny, R95 KF34

Telephone 056 776 1591

E-mail [info@cch-architects.com](mailto:info@cch-architects.com)

Regd Office: Lacken House, Dublin Road, Kilkenny, R95 KF34

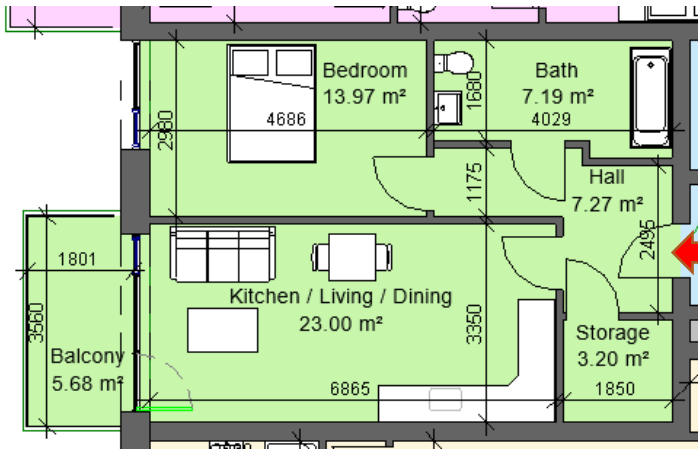
Registration No. 514202

Managing Director ; Arthur Hickey, B.Arch, Dip.Arb, FRIAI, FMCI Arb  
Company Secretary: Lynda Hickey, MIA

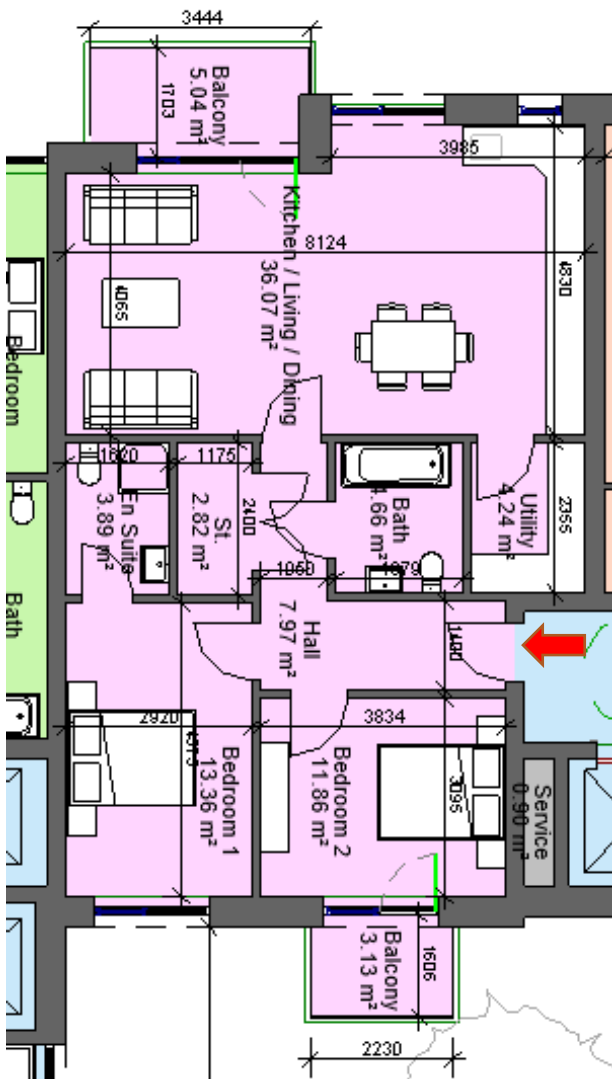
VAT Registration No 3190919G



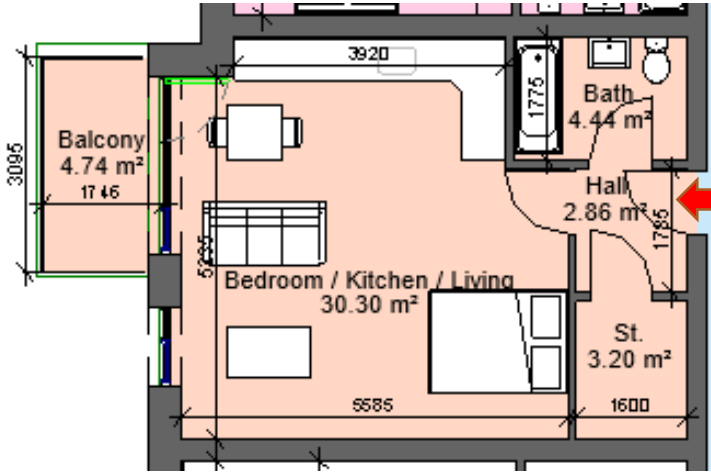




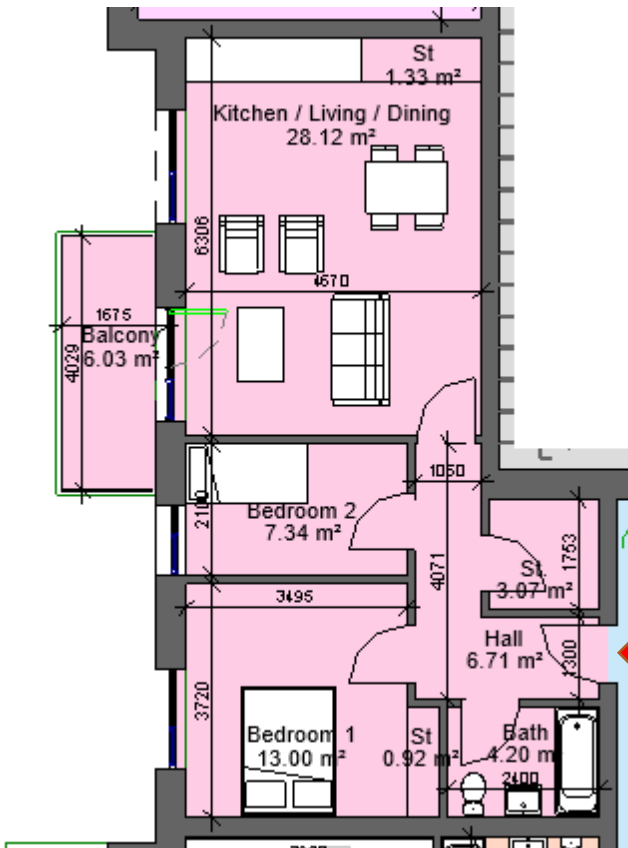
Sector 8B		
Block 1, Apartment 3, 15, 30, 45, 60		
1 Bed 2 Person		
Total Area	Min. req. area	Proposed
Total Apartment Area	45sq.m	57.06sq.m
Total Kitchen / Living / Dining	23sq.m	23sq.m
Bedroom 1	11.4sq.m	13.97sq.m
Agg. Storage	3sq.m	3.2sq.m
Private Open Space	5sq.m	5.68sq.m
Dual Aspect		NO
Floor area 10% greater than minimum floor area?		YES



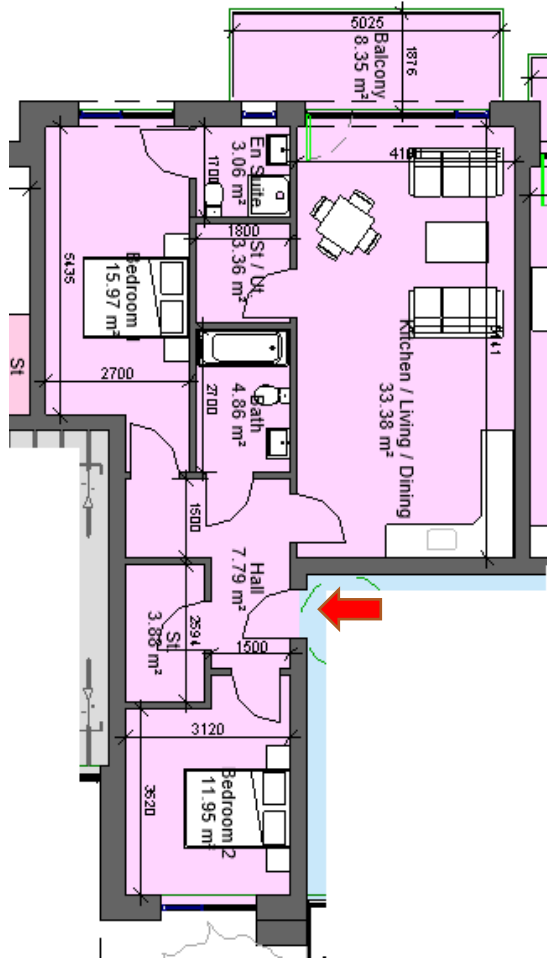
Sector 8B		
Block 1, Apartment 4, 16, 31, 46, 61		
2 Bed 4 Person		
Total Area	Min. req. area	Proposed
Total Apartment Area	73sq.m	88.92sq.m
Total Kitchen / Living / Dining	30sq.m	36.07sq.m
Bedroom 1	13sq.m	13.36sq.m
Bedroom 2	11.4sq.m	11.86sq.m
Agg. Bedroom Area	24.4sq.m	25.22sq.m
Agg. Storage	6sq.m	7.06sq.m
Private Open Space	7sq.m	8.17sq.m
Dual Aspect		YES
Floor area 10% greater than minimum floor area?		YES



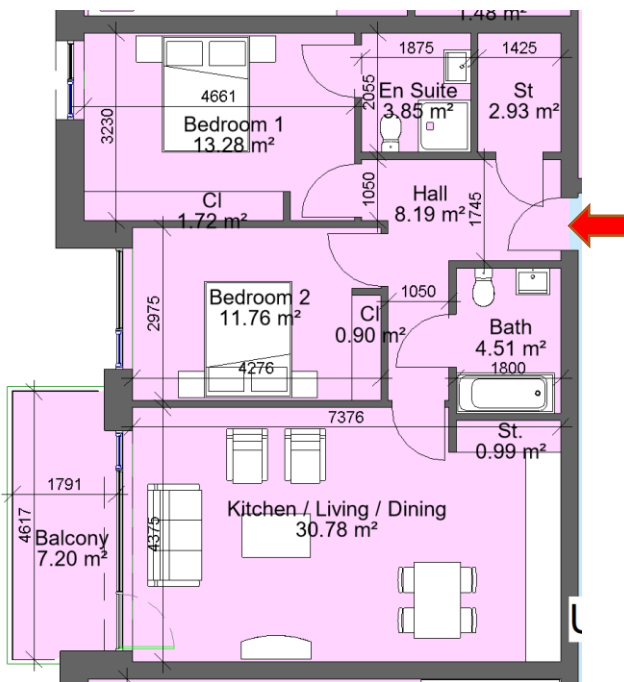
Sector 8B		
Block 1, Apartment 5, 17, 32, 47, 62, 73		
Studio Apartment		
Total Area	Min. req. area	Proposed
Total Apartment Area	37sq.m	42.12sq.m
Total Kitchen / Living / Dining / Bedroom	30sq.m	30.3sq.m
Agg. Storage	3sq.m	3.2sq.m
Private Open Space	4sq.m	4.74sq.m
Dual Aspect		NO
Floor area 10% greater than minimum floor area?		YES



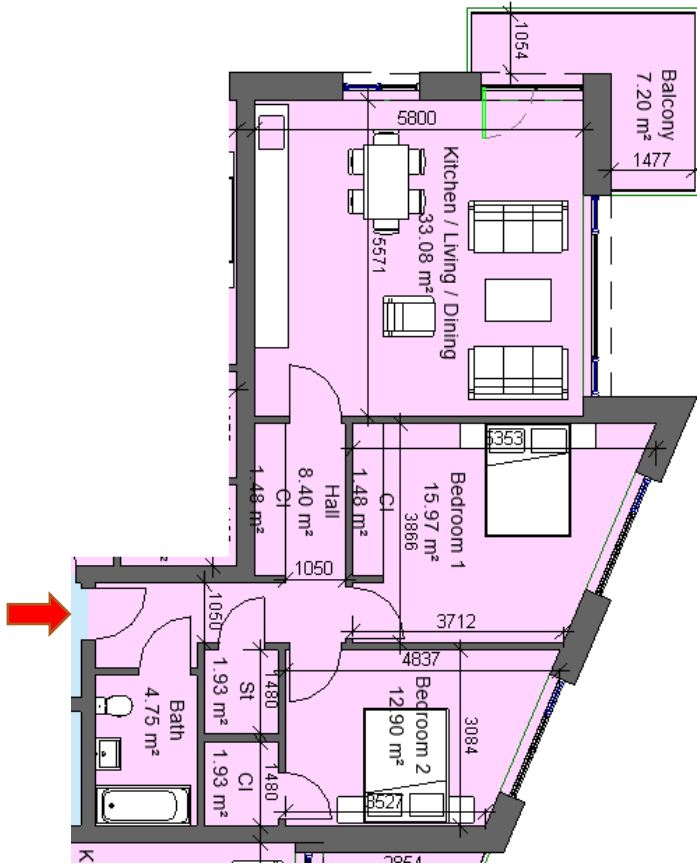
Sector 8B		
Block 1, Apartment 6, 18, 33, 48, 63, 74		
2 Bed 3 Person		
Total Area	Min. req. area	Proposed
Total Apartment Area	63sq.m	67.27sq.m
Total Kitchen / Living / Dining	28sq.m	28.12sq.m
Bedroom 1	13sq.m	13sq.m
Bedroom 2	7.1sq.m	7.34sq.m
Agg. Bedroom Area	20.1sq.m	20.34sq.m
Agg. Storage	5sq.m	5.32sq.m
Private Open Space	6sq.m	6.03sq.m
Dual Aspect		NO
Floor area 10% greater than minimum floor area?		NO



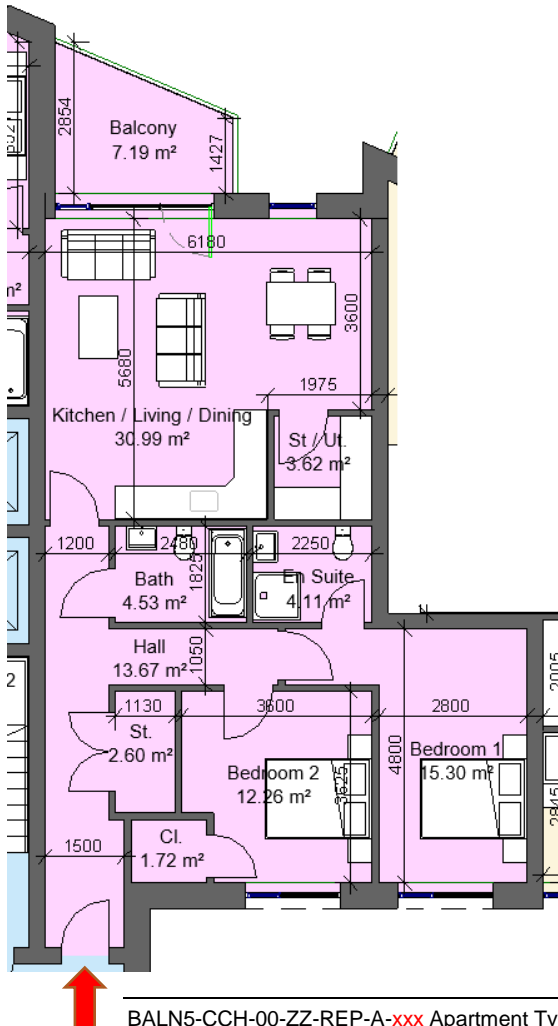
Sector 8B		
Block 1, Apartment 7, 20, 35, 50, 65, 76		
2 Bed 4 Person		
Total Area	Min. req. area	Proposed
Total Apartment Area	73sq.m	87.83sq.m
Total Kitchen / Living / Dining	30sq.m	33.38sq.m
Bedroom 1	13sq.m	15.97sq.m
Bedroom 2	11.4sq.m	11.95sq.m
Agg. Bedroom Area	24.4sq.m	27.92sq.m
Agg. Storage	6sq.m	7.47sq.m
Private Open Space	7sq.m	8.35sq.m
Dual Aspect		YES
Floor area 10% greater than minimum floor area?		YES



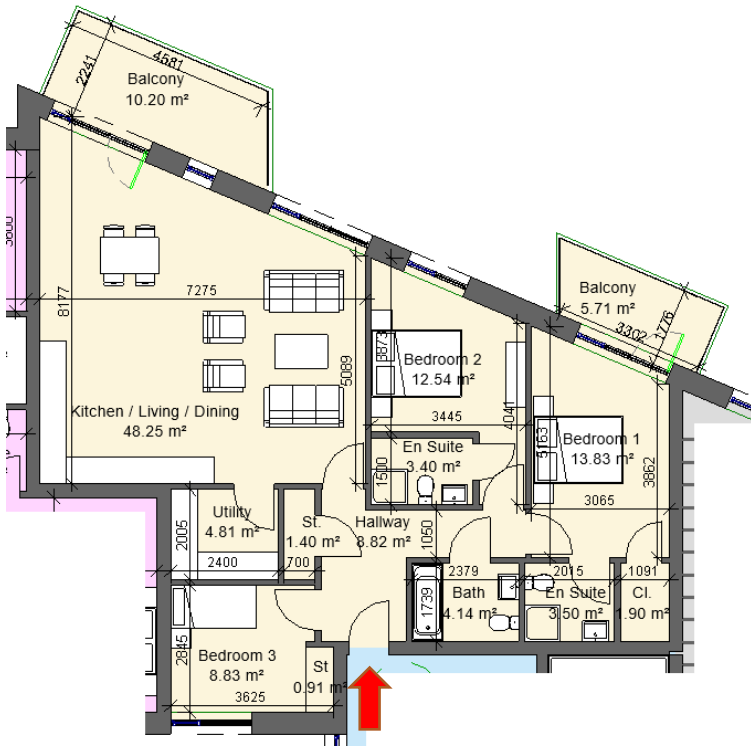
Sector 8B		
Block 1, Apartment 8, 21, 36, 51, 66, 77		
2 Bed 4 Person		
Total Area	Min. req. area	Proposed
Total Apartment Area	73sq.m	82.58sq.m
Total Kitchen / Living / Dining	30sq.m	30.78sq.m
Bedroom 1	13sq.m	13.28sq.m
Bedroom 2	11.4sq.m	11.76sq.m
Agg. Bedroom Area	24.4sq.m	25.04sq.m
Agg. Storage	6sq.m	6.54sq.m
Private Open Space	7sq.m	7.2sq.m
Dual Aspect		NO
Floor area 10% greater than minimum floor area?		YES



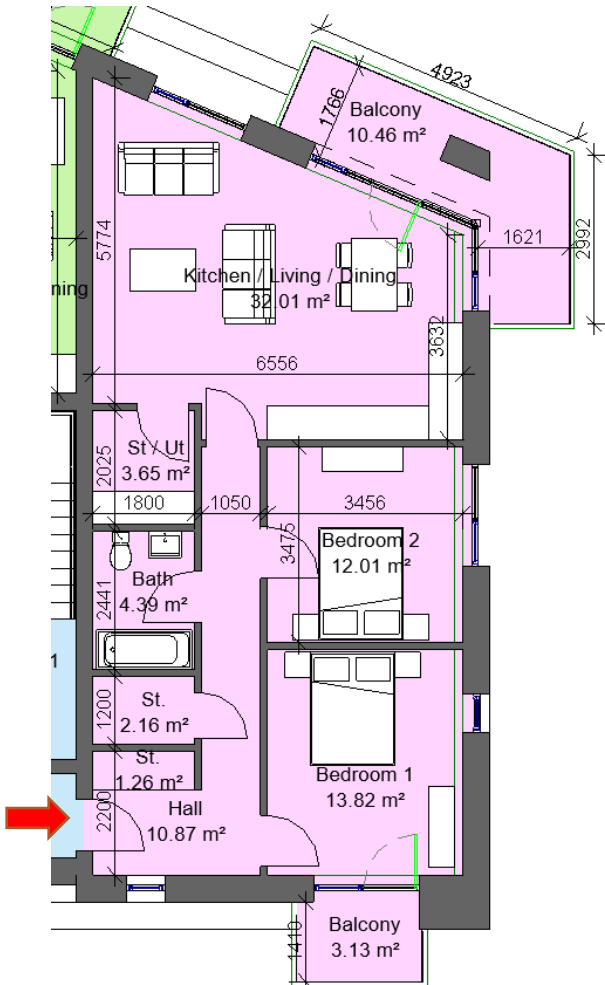
Sector 8B		
Block 1, Apartment 9, 22, 37, 52, 67, 78, 83, 86, 89, 92, 95		
2 Bed 4 Person		
Total Area	Min. req. area	Proposed
Total Apartment Area	73sq.m	84.55sq.m
Total Kitchen / Living / Dining	30sq.m	33.08sq.m
Bedroom 1	13sq.m	15.97sq.m
Bedroom 2	11.4sq.m	12.9sq.m
Agg. Bedroom Area	24.4sq.m	28.87sq.m
Agg. Storage	6sq.m	6.82sq.m
Private Open Space	7q.m	7.2sq.m
Dual Aspect		YES
Floor area 10% greater than minimum floor area?		YES



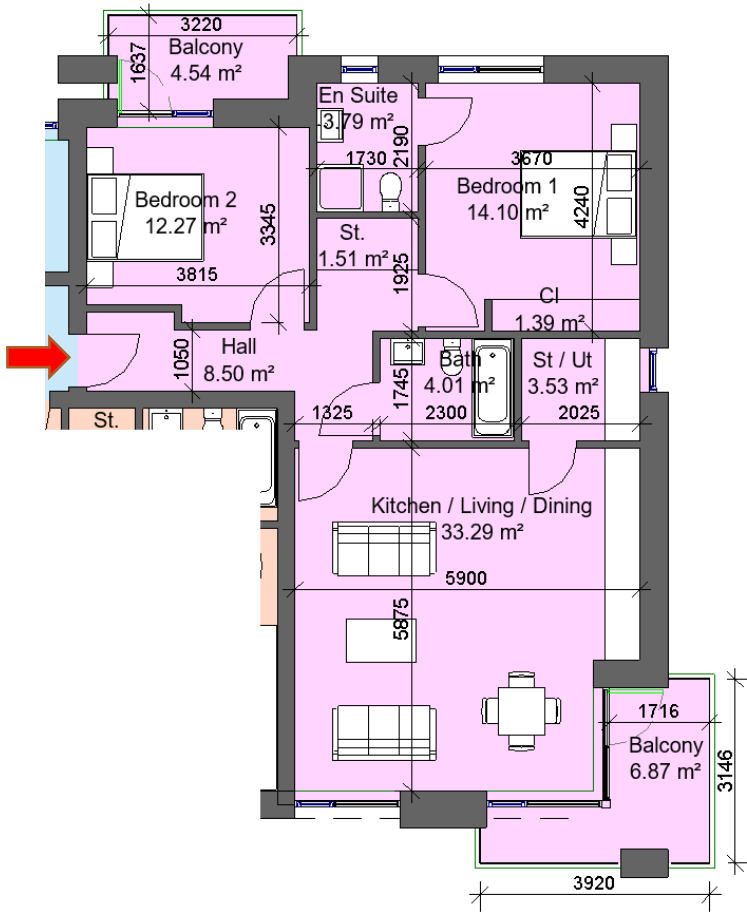
Sector 8B		
Block 1, Apartment 10, 23, 38, 53, 68, 79		
2 Bed 4 Person		
Total Area	Min. req. area	Proposed
Total Apartment Area	73sq.m	93.47sq.m
Total Kitchen / Living / Dining	30sq.m	30.99sq.m
Bedroom 1	13sq.m	15.3sq.m
Bedroom 2	11.4sq.m	12.26sq.m
Agg. Bedroom Area	24.4sq.m	27.56sq.m
Agg. Storage	6sq.m	7.94sq.m
Private Open Space	7sq.m	7.19sq.m
Dual Aspect		YES
Floor area 10% greater than minimum floor area?		YES



Sector 8B		
Block 1, Apartment 11		
3 Bed 5 Person		
Total Area	Min. req. area	Proposed
Total Apartment Area	90sq.m	116.55sq.m
Total Kitchen / Living / Dining	34sq.m	48.25sq.m
Bedroom 1	13sq.m	13.83sq.m
Bedroom 2	11.4sq.m	12.54sq.m
Bedroom 3	7.1sq.m	8.83sq.m
Agg. Bedroom Area	31.5sq.m	35.2sq.m
Agg. Storage	9sq.m	9.02sq.m
Private Open Space	9sq.m	15.91sq.m
Dual Aspect		YES
Floor area 10% greater than minimum floor area?		YES



Sector 8B		
Block 1, Apartment 12, 26, 41, 56, 71, 81		
2 Bed 4 Person		
Total Area	Min. req. area	Proposed
Total Apartment Area	73sq.m	83.58sq.m
Total Kitchen / Living / Dining	30sq.m	32.01sq.m
Bedroom 1	13sq.m	13.82sq.m
Bedroom 2	11.4sq.m	12.01sq.m
Agg. Bedroom Area	24.4sq.m	25.83sq.m
Agg. Storage	6sq.m	7.07sq.m
Private Open Space	7sq.m	13.59sq.m
Dual Aspect		YES
Floor area 10% greater than minimum floor area?		YES

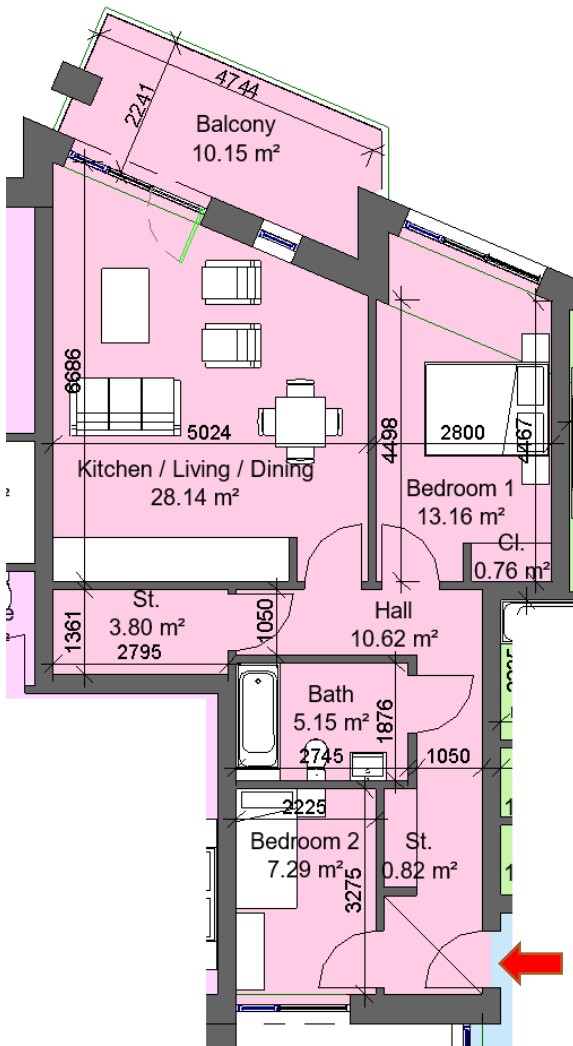


Sector 8B		
Block 1, Apartment 12, 27, 42, 57		
2 Bed 4 Person		
Total Area	Min. req. area	Proposed
Total Apartment Area	73sq.m	85.49sq.m
Total Kitchen / Living / Dining	30sq.m	33.29sq.m
Bedroom 1	13sq.m	14.1sq.m
Bedroom 2	11.4sq.m	12.27sq.m
Agg. Bedroom Area	24.4sq.m	26.37sq.m
Agg. Storage	6sq.m	6.43sq.m
Private Open Space	7sq.m	11.41sq.m
Dual Aspect		YES
Floor area 10% greater than minimum floor area?		YES

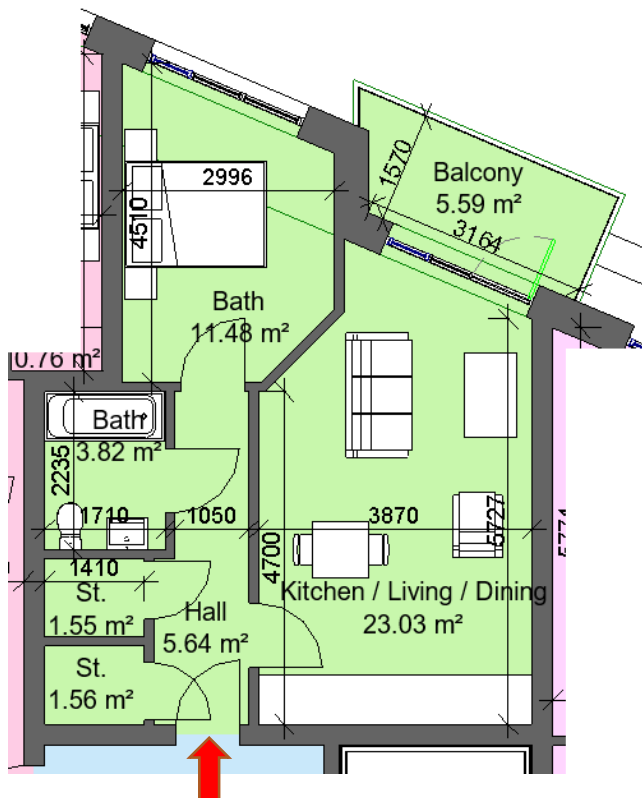


Sector 8B		
Block 1, Apartment 19, 34, 49, 64, 75		
1 Bed 2 Person		
Total Area	Min. req. area	Proposed
Total Apartment Area	45sq.m	54.15sq.m
Total Kitchen / Living / Dining	23sq.m	24.74sq.m
Bedroom 1	11.4sq.m	12.47sq.m
Agg. Storage	3sq.m	5.16sq.m
Private Open Space	5sq.m	5.11sq.m
Dual Aspect		NO
Floor area 10% greater than minimum floor area?		YES

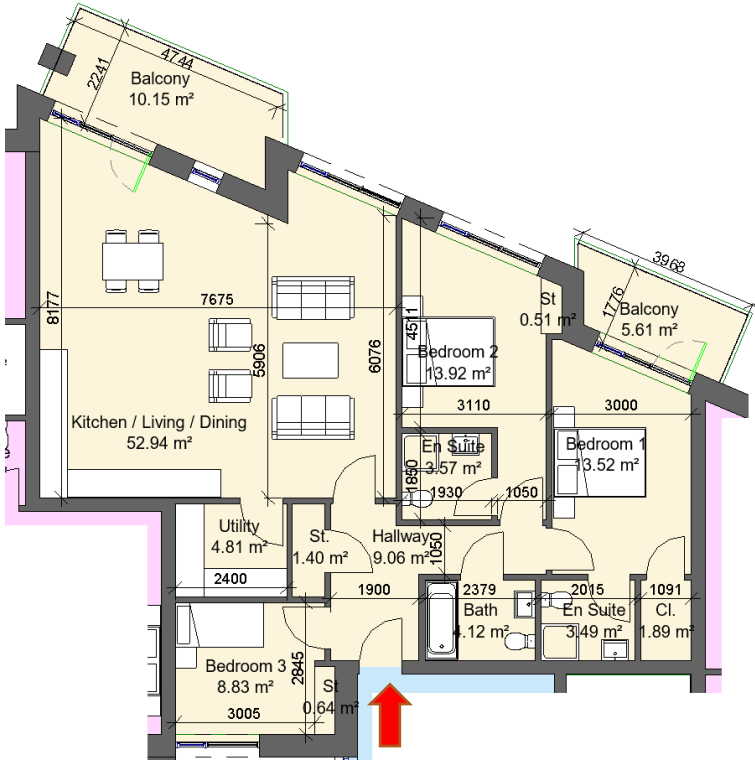




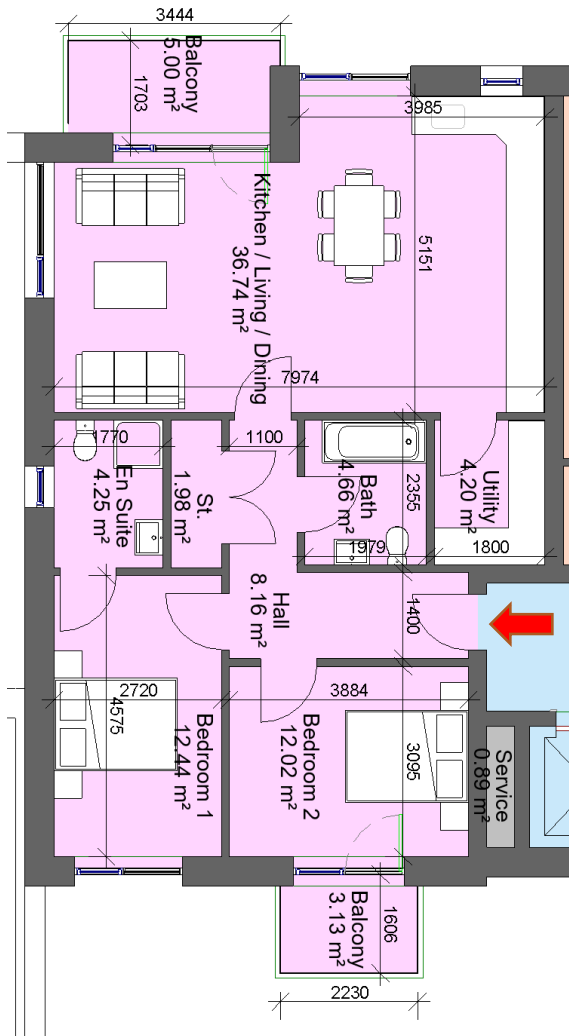
Sector 8B		
Block 1, Apartment 24, 39, 54, 69		
2 Bed 3 Person		
Total Area	Min. req. area	Proposed
Total Apartment Area	63sq.m	72.98sq.m
Total Kitchen / Living / Dining	28sq.m	28.14sq.m
Bedroom 1	13sq.m	13.16sq.m
Bedroom 2	7.1sq.m	7.29sq.m
Agg. Bedroom Area	20.1sq.m	20.45sq.m
Agg. Storage	5sq.m	5.38sq.m
Private Open Space	6sq.m	10.15sq.m
Dual Aspect		YES
Floor area 10% greater than minimum floor area?		YES



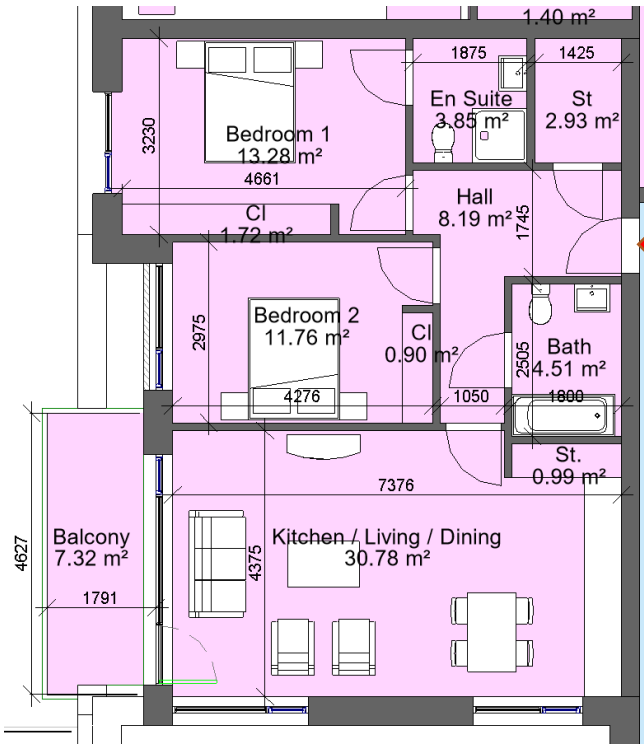
Sector 8B		
Block 1, Apartment 25, 40, 55, 70		
1 Bed 2 Person		
Total Area	Min. req. area	Proposed
Total Apartment Area	45sq.m	48.89sq.m
Total Kitchen / Living / Dining	23sq.m	23.03sq.m
Bedroom 1	11.4sq.m	11.48sq.m
Agg. Storage	3sq.m	3.11sq.m
Private Open Space	5sq.m	5.59sq.m
Dual Aspect		NO
Floor area 10% greater than minimum floor area?		NO



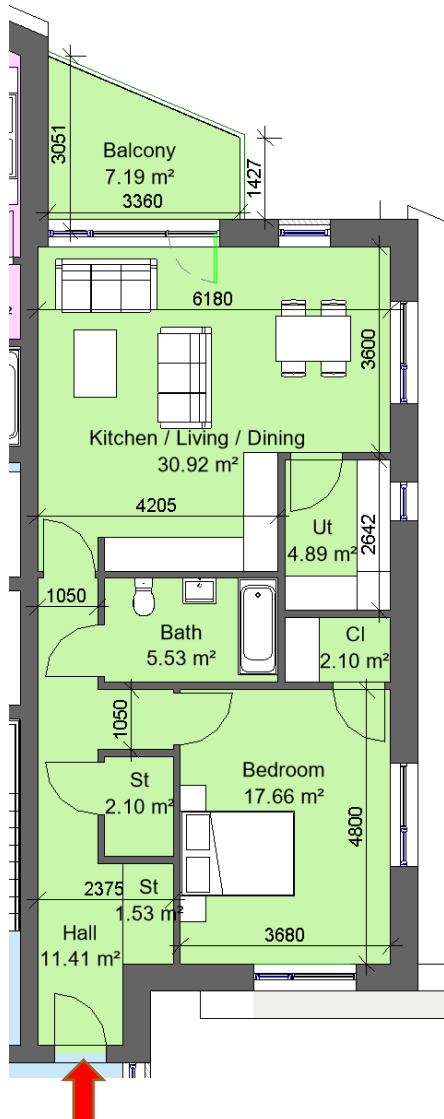
Sector 8B		
Block 1, Apartment 80		
3 Bed 5 Person		
Total Area	Min. req. area	Proposed
Total Apartment Area	90sq.m	124.23sq.m
Total Kitchen / Living / Dining	34sq.m	52.94sq.m
Bedroom 1	13sq.m	14.42sq.m
Bedroom 2	11.4sq.m	13.52sq.m
Bedroom 3	7.1sq.m	8.83sq.m
Agg. Bedroom Area	31.5sq.m	36.77sq.m
Agg. Storage	9sq.m	9.25sq.m
Private Open Space	9sq.m	15.76sq.m
Dual Aspect		YES
Floor area 10% greater than minimum floor area?		YES



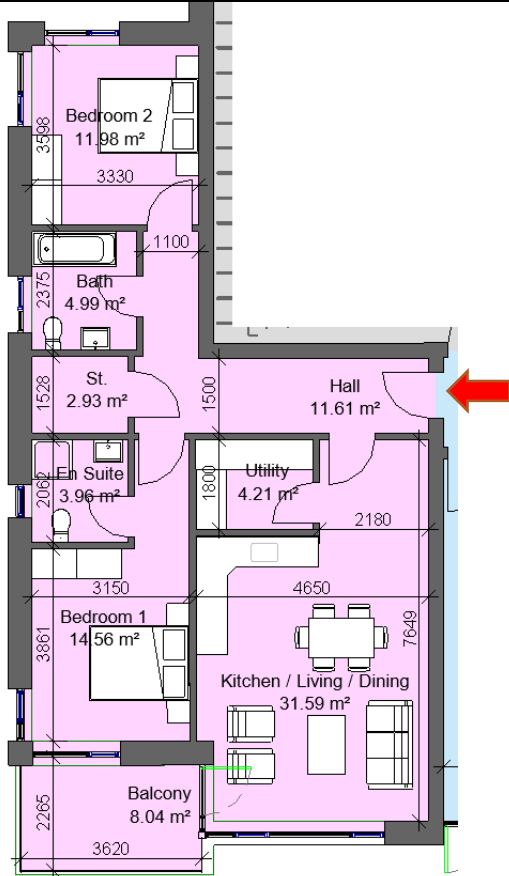
Sector 8B		
Block 1, Apartment 72		
2 Bed 4 Person		
Total Area	Min. req. area	Proposed
Total Apartment Area	73sq.m	88.44sq.m
Total Kitchen / Living / Dining	30sq.m	36.74sq.m
Bedroom 1	13sq.m	12.44sq.m
Bedroom 2	11.4sq.m	12.02sq.m
Agg. Bedroom Area	24.4sq.m	24.46sq.m
Agg. Storage	6sq.m	6.18sq.m
Private Open Space	7sq.m	8.13sq.m
Dual Aspect		YES
Floor area 10% greater than minimum floor area?		YES



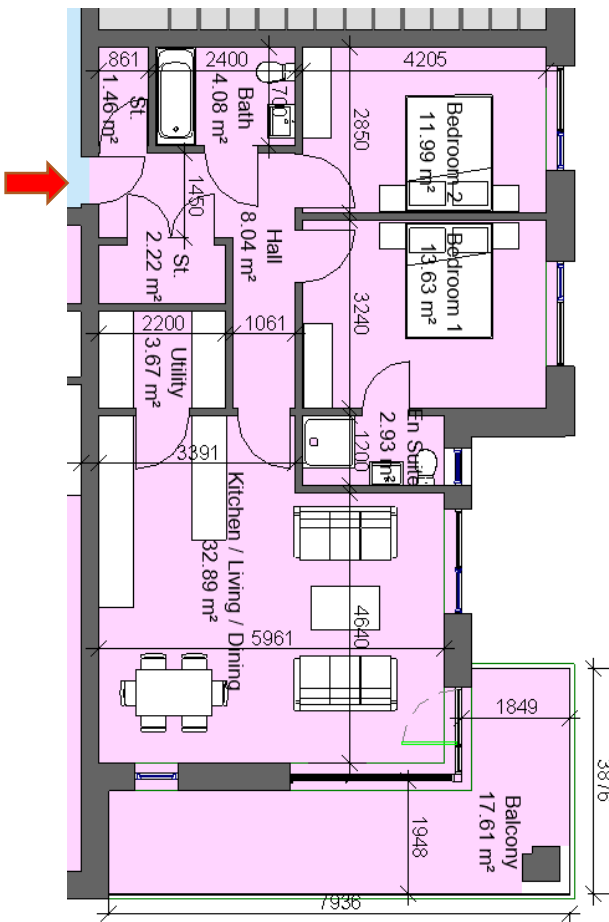
Sector 8B		
Block 1, Apartment 82, 85, 88, 91, 94		
2 Bed 4 Person		
Total Area	Min. req. area	Proposed
Total Apartment Area	73sq.m	82.58sq.m
Total Kitchen / Living / Dining	30sq.m	30.78sq.m
Bedroom 1	13sq.m	13.28sq.m
Bedroom 2	11.4sq.m	11.76sq.m
Agg. Bedroom Area	24.4sq.m	25.04sq.m
Agg. Storage	6sq.m	6.54sq.m
Private Open Space	7sq.m	7.32sq.m
Dual Aspect		YES
Floor area 10% greater than minimum floor area?		YES



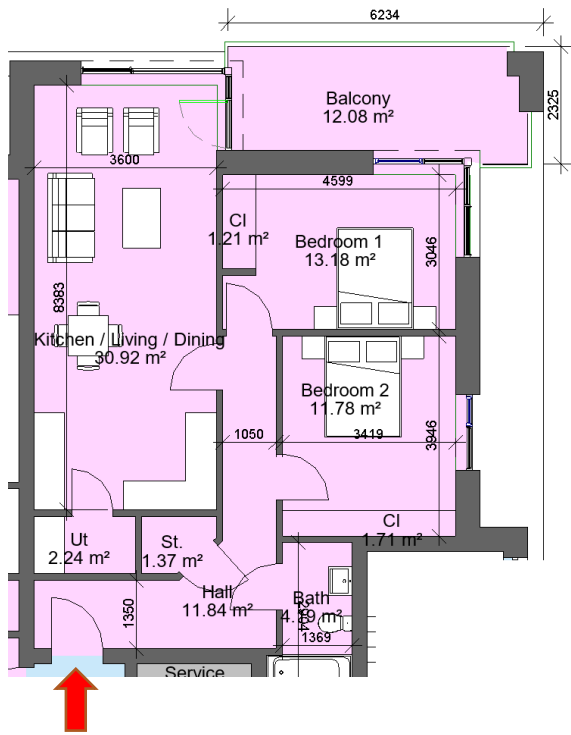
Sector 8B		
Block 1, Apartment 84, 87, 90, 93, 96		
1 Bed 2 Person		
Total Area	Min. req. area	Proposed
Total Apartment Area	45sq.m	79.67sq.m
Total Kitchen / Living / Dining	23sq.m	30.92sq.m
Bedroom 1	11.4sq.m	17.66sq.m
Agg. Storage	3sq.m	10.62sq.m
Private Open Space	5sq.m	7.19sq.m
Dual Aspect		YES
Floor area 10% greater than minimum floor area?		YES



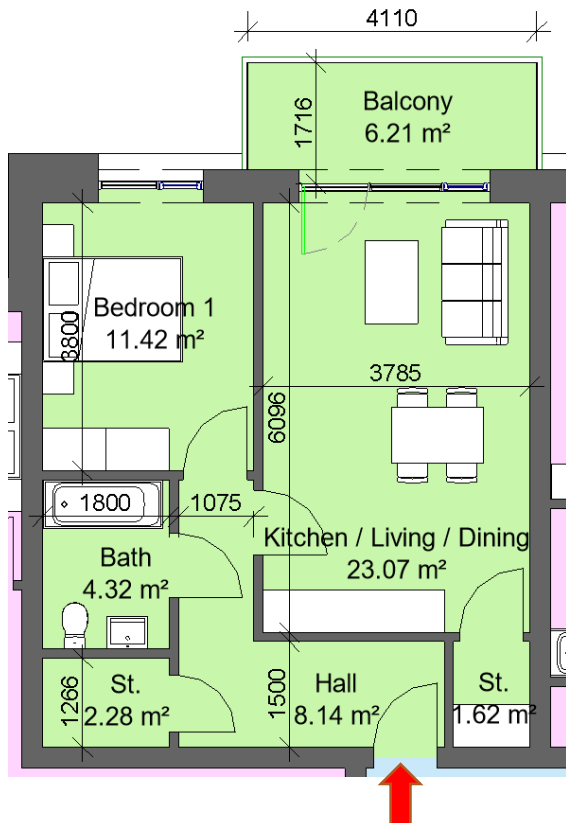
Sector 8B		
Block 2, Apartment 1, 4, 8, 12, 16, 20		
2 Bed 4 Person		
Total Area	Min. req. area	Proposed
Total Apartment Area	73sq.m	89.38sq.m
Total Kitchen / Living / Dining	30sq.m	31.59sq.m
Bedroom 1	13sq.m	14.56sq.m
Bedroom 2	11.4sq.m	11.98sq.m
Agg. Bedroom Area	24.4sq.m	26.54sq.m
Agg. Storage	6sq.m	7.14sq.m
Private Open Space	7sq.m	8.04sq.m
Dual Aspect		YES
Floor area 10% greater than minimum floor area?		YES



Sector 8B		
Block 2, Apartment 2, 6, 10, 14, 18, 22, 24, 26, 28		
2 Bed 4 Person		
Total Area	Min. req. area	Proposed
Total Apartment Area	73sq.m	84.42sq.m
Total Kitchen / Living / Dining	30sq.m	32.89sq.m
Bedroom 1	13sq.m	13.63sq.m
Bedroom 2	11.4sq.m	11.99sq.m
Agg. Bedroom Area	24.4sq.m	25.62sq.m
Agg. Storage	6sq.m	7.35sq.m
Private Open Space	7sq.m	17.61sq.m
Dual Aspect		YES
Floor area 10% greater than minimum floor area?		YES



Sector 8B		
Block 2, Apartment 3, 7, 11, 15, 19, 23, 25, 27, 29		
2 Bed 4 Person		
Total Area	Min. req. area	Proposed
Total Apartment Area	73sq.m	81.03sq.m
Total Kitchen / Living / Dining	30sq.m	30.16sq.m
Bedroom 1	13sq.m	13.18sq.m
Bedroom 2	11.4sq.m	11.78sq.m
Agg. Bedroom Area	24.4sq.m	24.96sq.m
Agg. Storage	6sq.m	6.53sq.m
Private Open Space	7sq.m	12.1sq.m
Dual Aspect		YES
Floor area 10% greater than minimum floor area?		YES



Sector 8B		
Block 2, Apartment 5, 9, 13, 17, 21		
1 Bed 2 Person		
Total Area	Min. req. area	Proposed
Total Apartment Area	45sq.m	53.47sq.m
Total Kitchen / Living / Dining	23sq.m	23.07sq.m
Bedroom 1	11.4sq.m	11.42sq.m
Agg. Storage	3sq.m	3.9sq.m
Private Open Space	5sq.m	6.21sq.m
Dual Aspect		NO
Floor area 10% greater than minimum floor area?		YES